

Data Management and Analytics Services

Our Goal Is Your Digital Success

ScienceSoft is an international IT consulting and software development company that has been working in the area of data analytics and management since 1989.

36

years
in data analytics

12

years
in big data

35+

patents in AI and
pattern recognition



Our Clients

62% of our revenue comes from clients that stay with us for 2+ years.

Baxter

PerkinElmer

nielsen

Miami Dade College

RBC Royal Bank

Eurasian Bank

alta resources

Alghanim INDUSTRIES

Walmart

Nestlé

Leo Burnett

ebay

EUMETSAT

T-Mobile

Viber

NASA JPL

Industry Competence

Our data analytics portfolio includes the projects for:

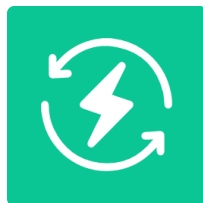
Manufacturing



Healthcare



Energy



BFSI



Marketing,
Advertising



Retail,
Wholesale



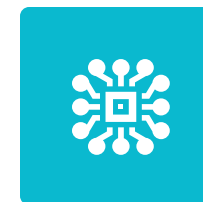
Oil & Gas



Professional
services



Logistics



IT

What Our Clients Say

“ When we first contacted ScienceSoft, we needed expert advice on the creation of the centralized analytical solution. ScienceSoft’s team members proved to be extremely flexible and responsive.



*Heather Owen Nigl, Chief Financial Officer
at Alta Resources*



“ We commissioned ScienceSoft to audit and upgrade our partially developed AI-based software. We are satisfied with our cooperation with ScienceSoft and their skilled development team, which smoothly fit into our project.



*Simen Løkka, CEO
at Travision AS*



“ bioAffinity Technologies hired ScienceSoft to help in the development of its automated data analysis software. Our project required a large amount of industry-specific methodology and algorithms <...>, which the team handled well.



*Maria Zannes, President & CEO
at bioAffinity Technologies*



Our Core Values

We are committed to providing top-quality solutions and services and ensuring full security of the data we access.

Service quality

Our ISO 9001-certified quality management system includes work habits, practices, and policies to ensure the high quality of our deliverables.



ISO 9001

LL-C (Certification)

Information security

Applying 114 security controls required by ISO 27001, we safeguard the information assets that we access during the project.



ISO 27001

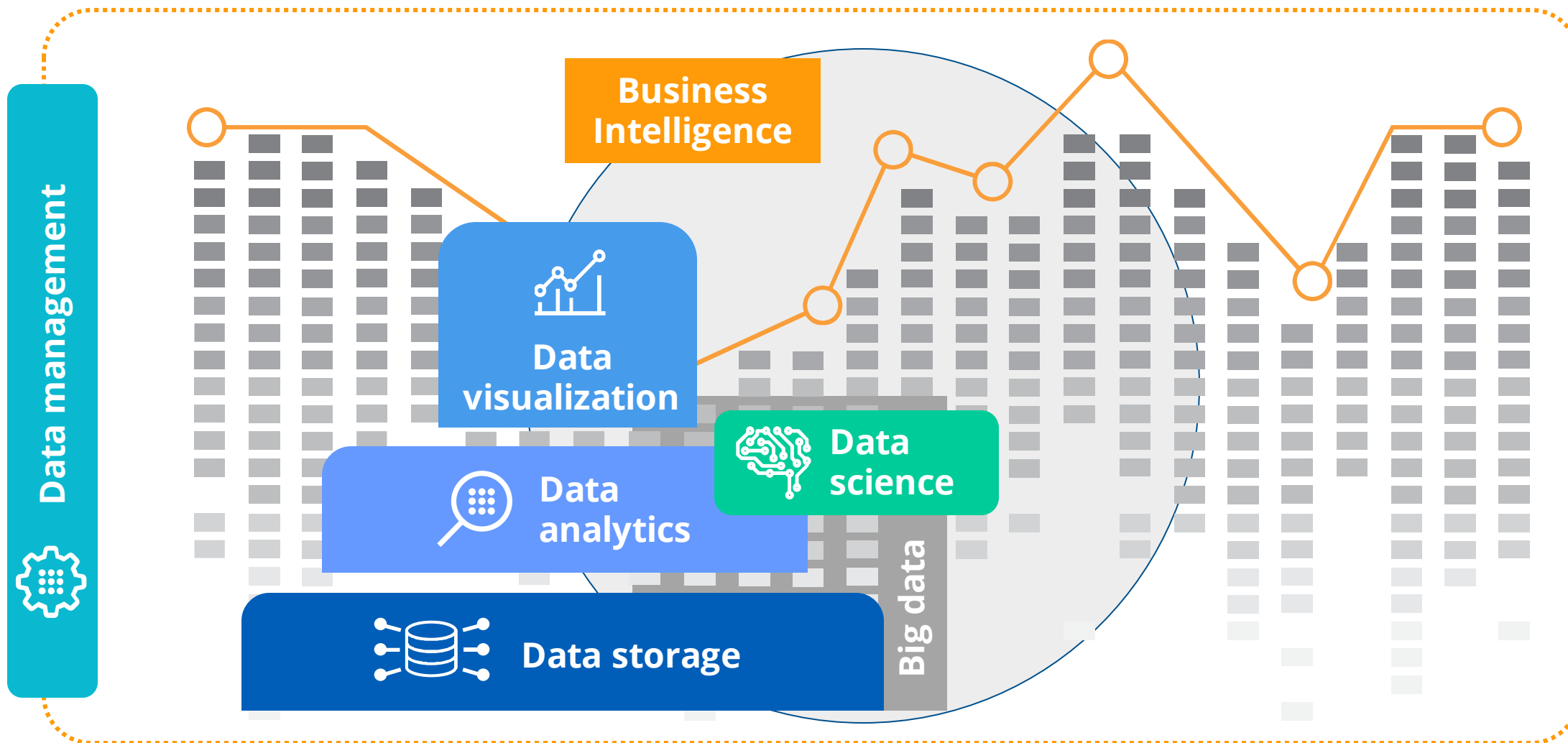
LL-C (Certification)

Dedication to innovations

Our ability to provide innovative IT solutions has earned us a position in the prestigious Global Outsourcing 100 list by IAOP.

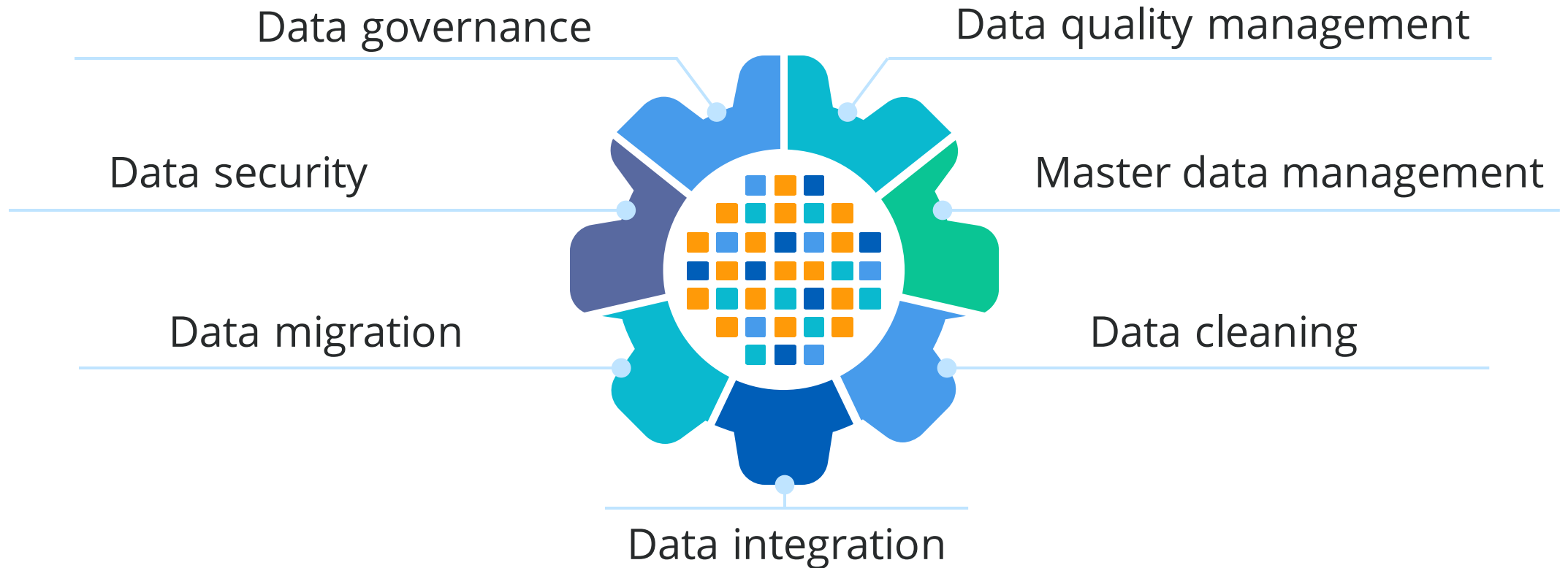


Data Analytics and Management Services



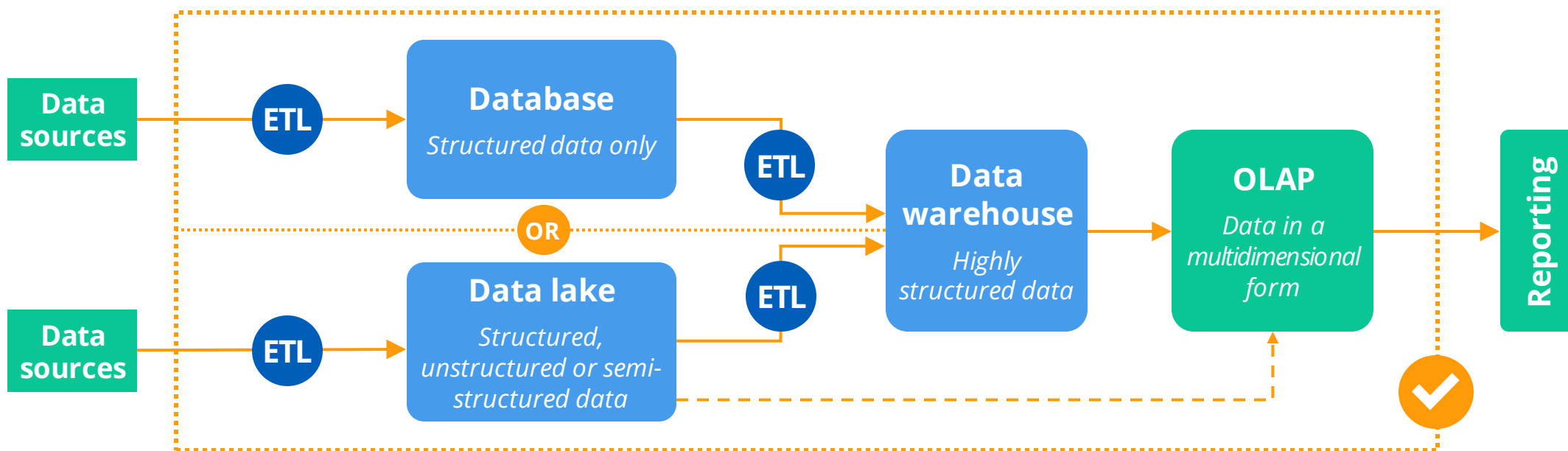
Data Management Services

We support you in managing your data, databases, and data-driven applications throughout the entire data management lifecycle:



Data Processing and Storage Services

Whatever data type you deal with – structured, semi-structured or unstructured – we help you organize efficient data storage and set up ETL processes to ensure uninterrupted and correct data flows.



Types of Data Analytics We Provide

Descriptive analytics

Accumulates raw data from multiple data sources to give insights about past events

Diagnostic analytics

Measures historical data against other data to find dependencies and explain why something happened

Predictive analytics

Interprets data to detect tendencies and predict future trends

Prescriptive analytics

Prescribes how to prevent a future problem or take advantage of a promising trend

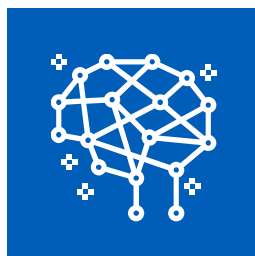
Applying Data Science

To find hidden patterns and dependencies and provide companies with extra insights, we run experiments on data, build probabilistic models, and apply sophisticated machine learning algorithms.



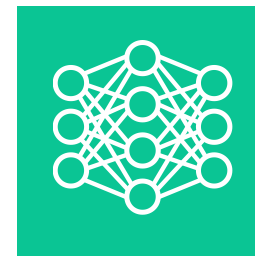
Statistical models

E.g., ARIMA, ANOVA, cluster analysis, time series models



Machine learning

Supervised and unsupervised learning algorithms, reinforcement learning methods



Deep learning

The most intricate part of ML, with recurrent and convolutional neural networks

Data Visualization



Data visualization principles we follow:

Insights is #1 goal

Intuitive reports and dashboards that provide users with much-needed business insights

Look at the data in more detail

Drill-down and filtering options allowing decision makers to look at their data from different angles

Respect to user roles

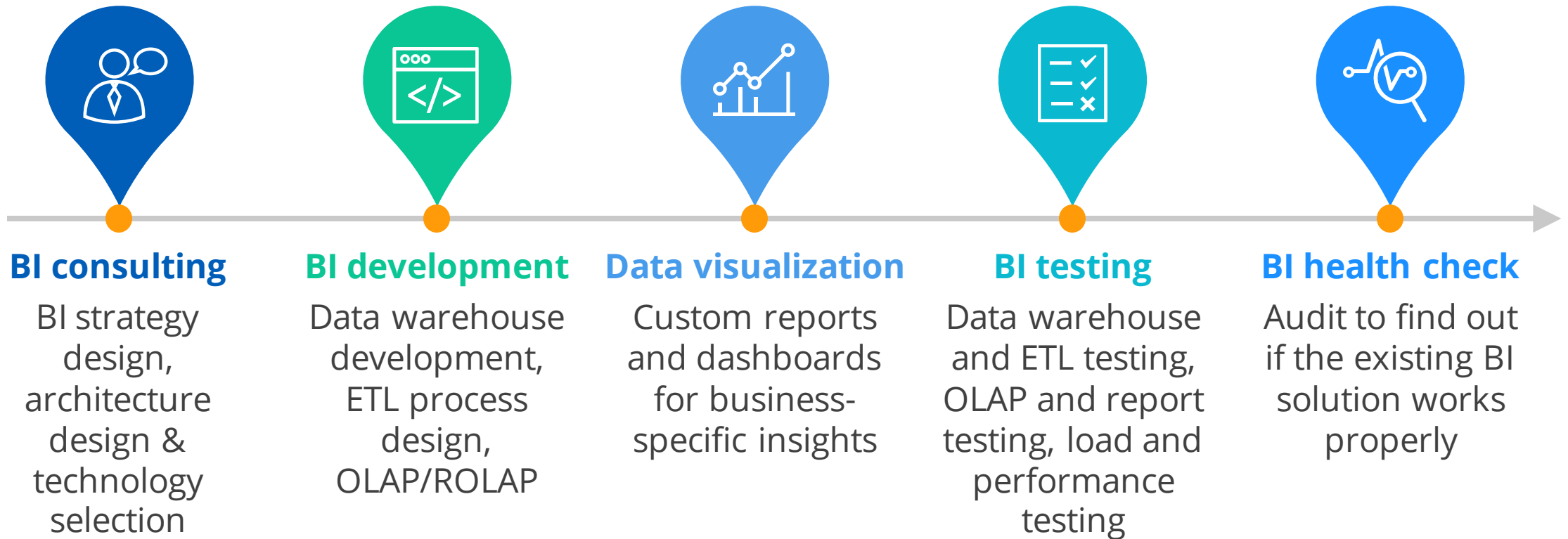
Special focus on user roles and data security challenges

Data from any view

UI/UX design both for desktop and mobile reporting

Business Intelligence Services

Since 2005, ScienceSoft has been delivering BI solutions that cover the needs of both business users and business analysts. Our BI services include:



Business Intelligence Technology Stack

Cloud data storage



Data warehouse technologies



Data integration



Data visualization



Big data



Machine learning



Programming languages



Big Data Technology Stack

Programming languages



Data streaming and stream processing



Storage



Batch processing



Big data databases



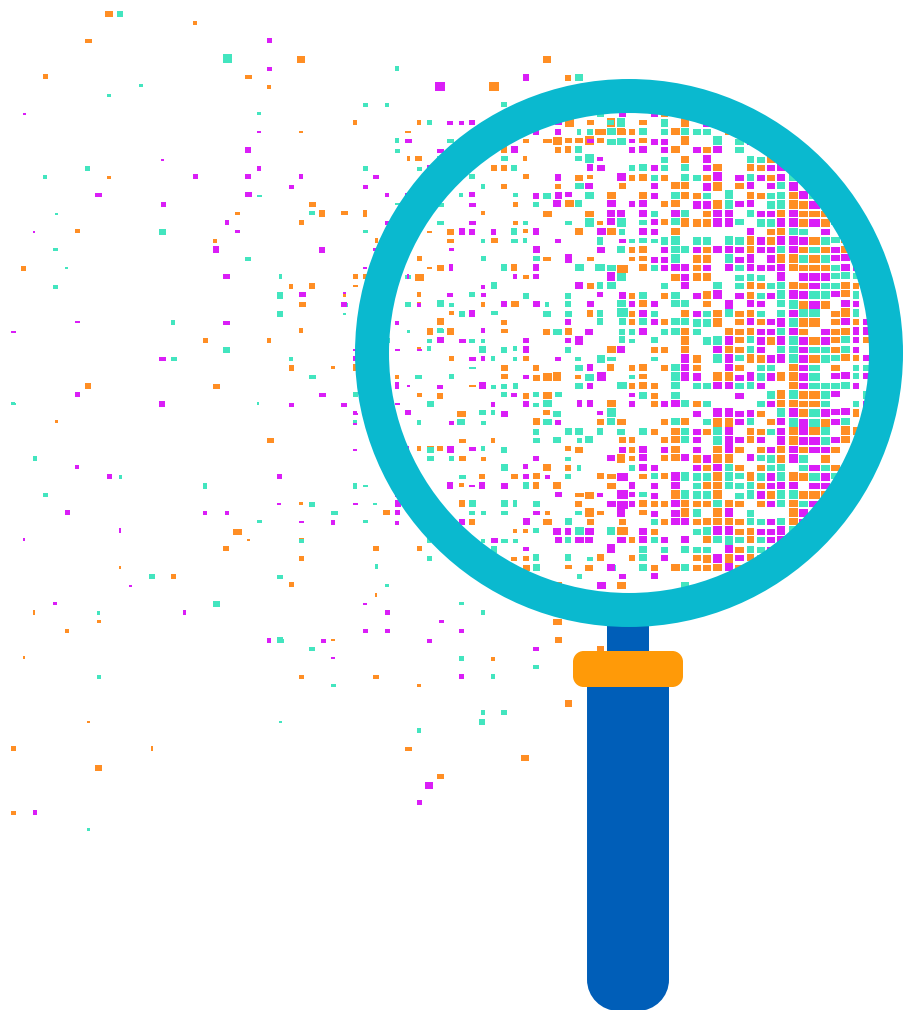
Data warehousing, ad hoc exploration, and reporting



Machine learning



Solutions We Implement



Financial analytics

Customer analytics

Marketing analytics

Sales analytics

Ecommerce analytics

Supply chain analytics

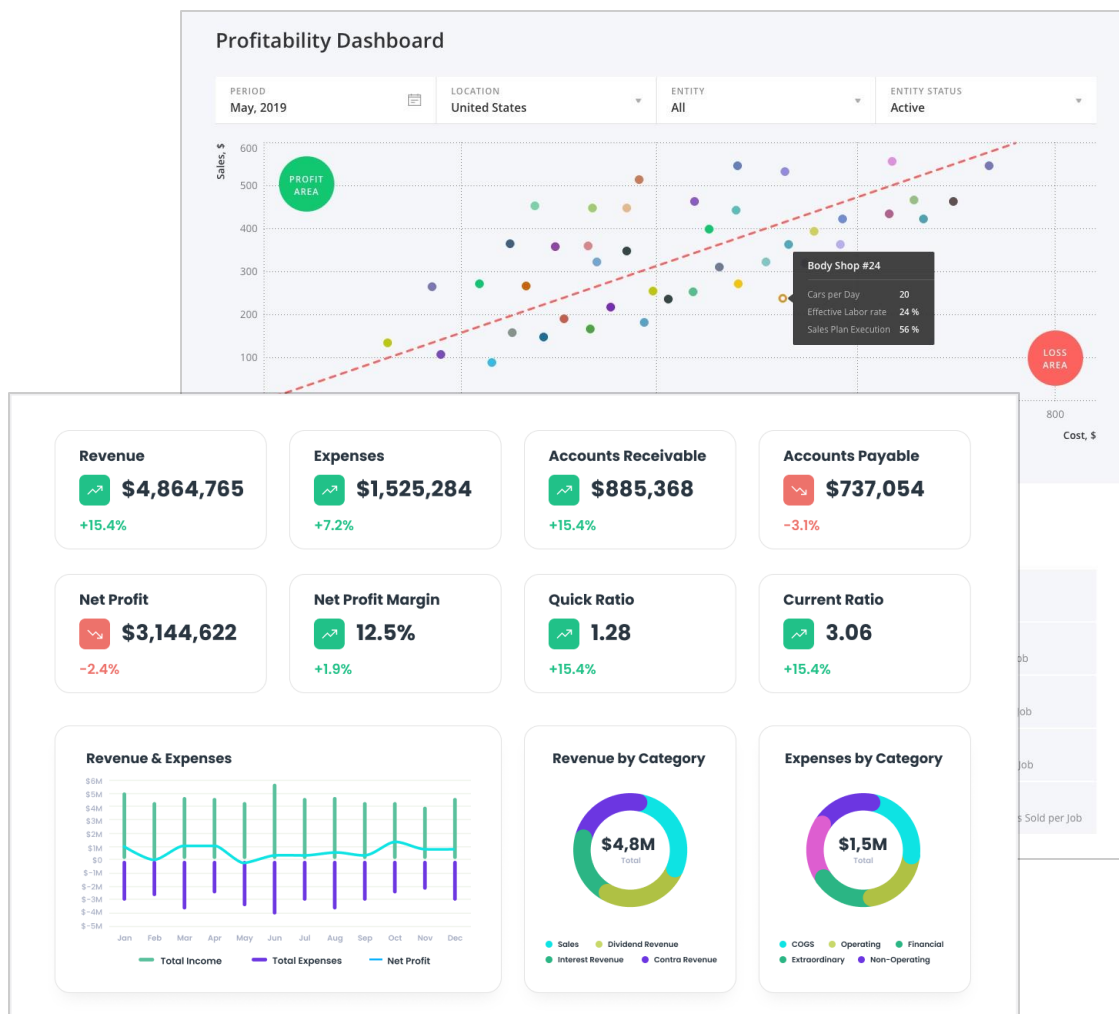
HR analytics

Analytics for fraud prevention

Corporate performance analytics

Industrial analytics

Financial Analytics



Sample features:



Continuous visibility into corporate financial performance



Tracking a company's revenue, expenses, profitability, and cash flow



Financial planning and budgeting



Financial risk forecasting and management



AI-based prescriptions on the optimal financial decisions

Customer Analytics

Sample features:

Customer behavior analysis and predictive modeling



Customer segmentation for tailored sales and marketing campaigns



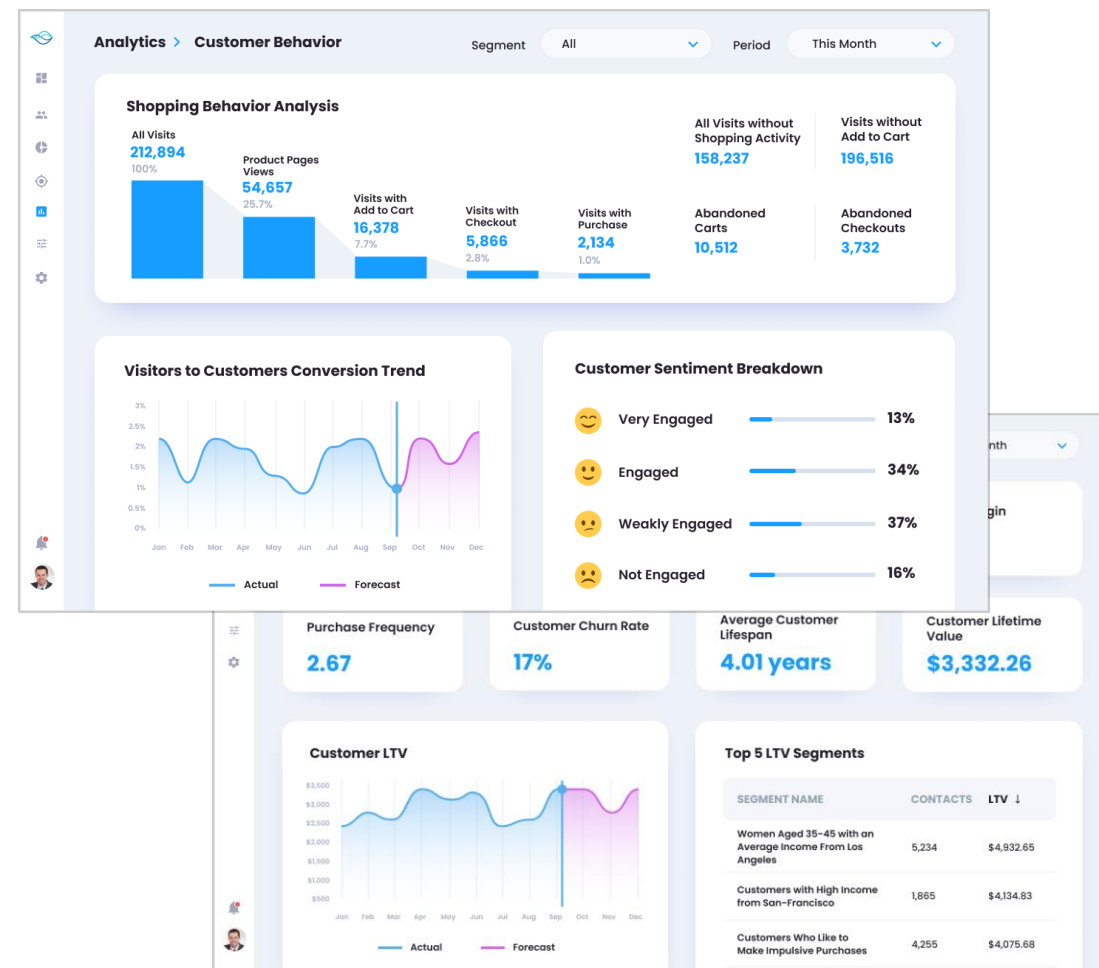
Cross-selling and upselling offers for extended customer lifetime value



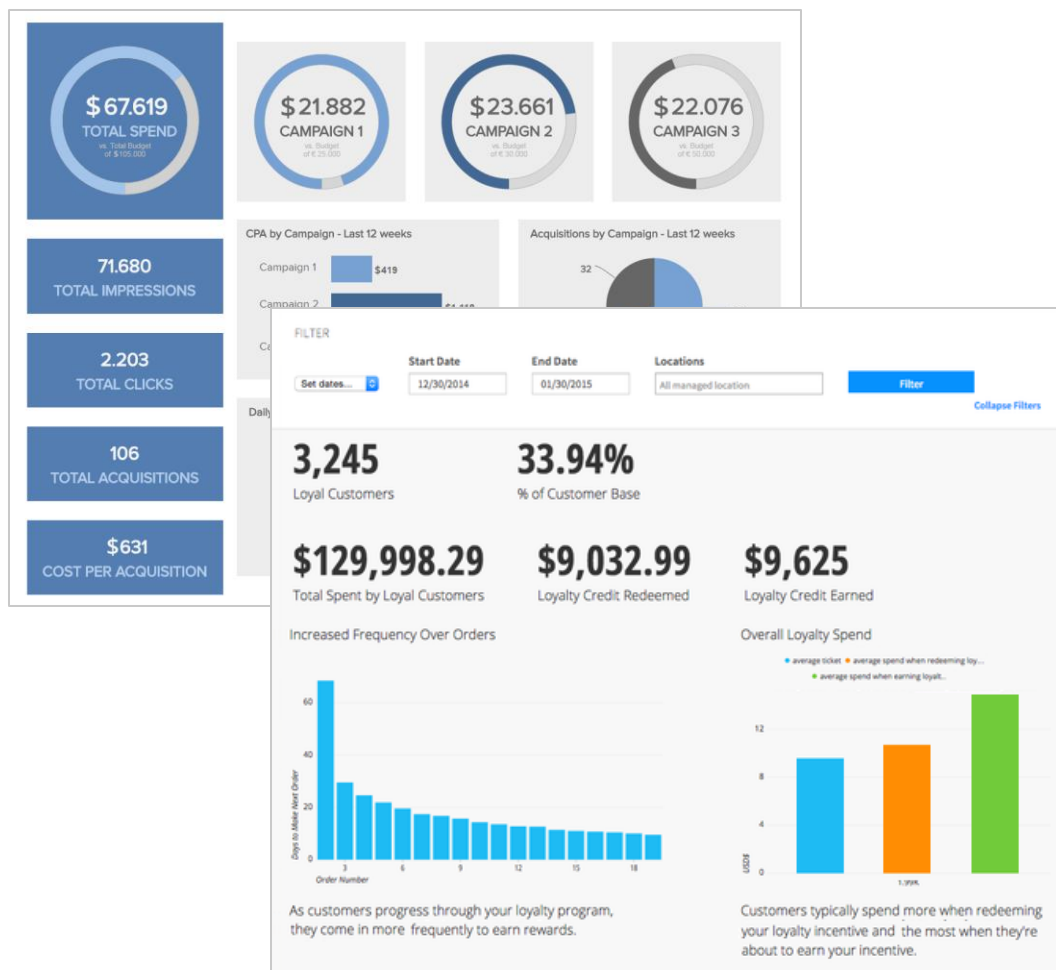
Predicting customer attrition and customer churn risk management



Customer sentiment analysis



Marketing Analytics



Sample features:



Analysis of loyalty program efficiency



Analysis of marketing campaigns



Pricing analysis



Brand portfolio analysis



Brand awareness analysis

Sales Analytics

Sample features:

Sales and profitability analysis



Progress measured against sales goals



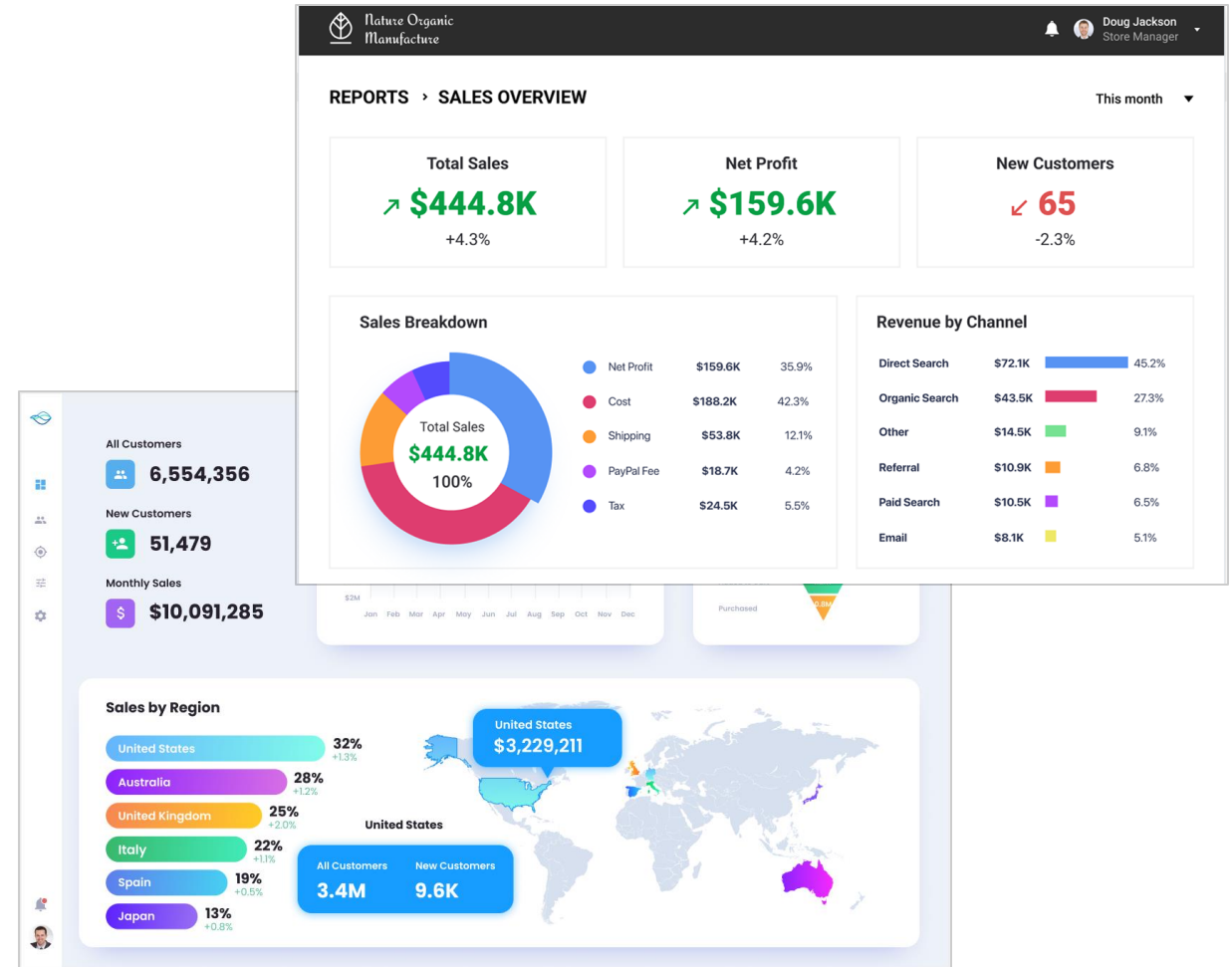
Category performance analysis



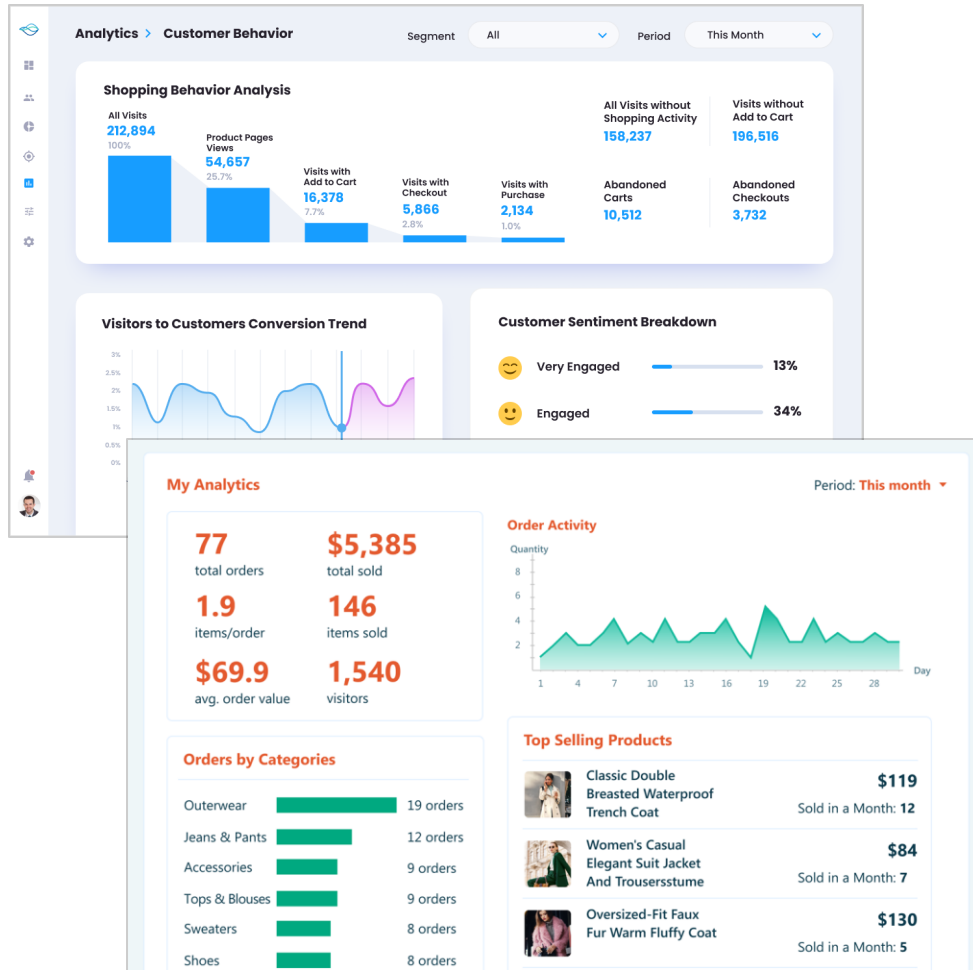
Sales seasonality analysis



Identifying and predicting sales trends



Ecommerce Analytics



Sample features:

- ✓ Conversion rates analysis
- ✓ Cart abandonment analysis
- ✓ Visitors' engagement analysis
- ✓ Assortment analysis
- ✓ Demand analysis
- ✓ Inventory management analysis
- ✓ Ecommerce fulfillment analysis

Corporate Performance Analytics

Sample features:

KPI status vs. target



Department performance analysis



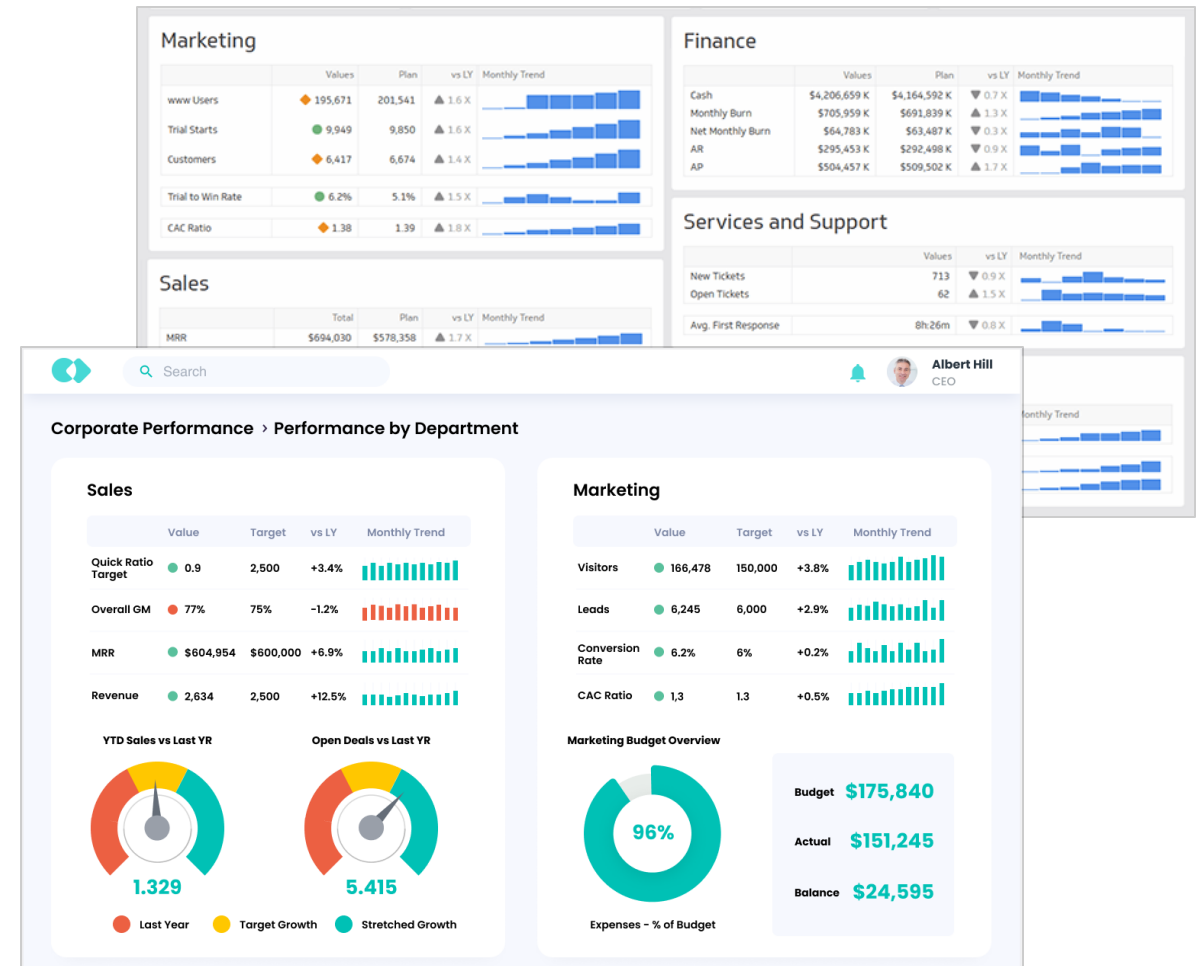
Employee performance analysis



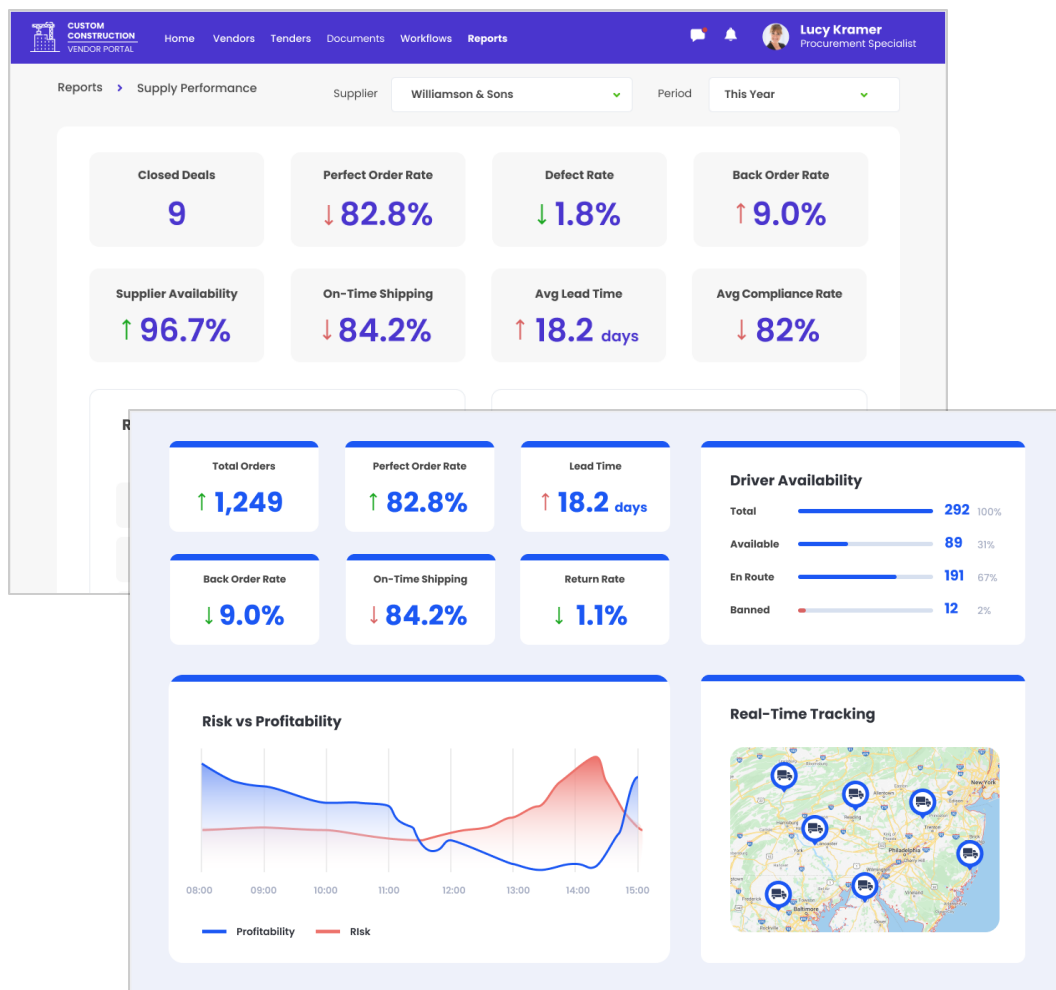
Financial, statutory, and management reporting



Root cause analysis



Supply Chain Analytics



Sample features:

- ✓ Identifying demand drivers, consumer demand forecasting
- ✓ Demand/supply balancing
- ✓ Supplier performance monitoring and evaluation
- ✓ Predictive route optimization
- ✓ Supply chain risks analysis
- ✓ Complete view of warehouse operations
- ✓ Multi-echelon inventory optimization

HR Analytics

Sample features:

Payroll analysis



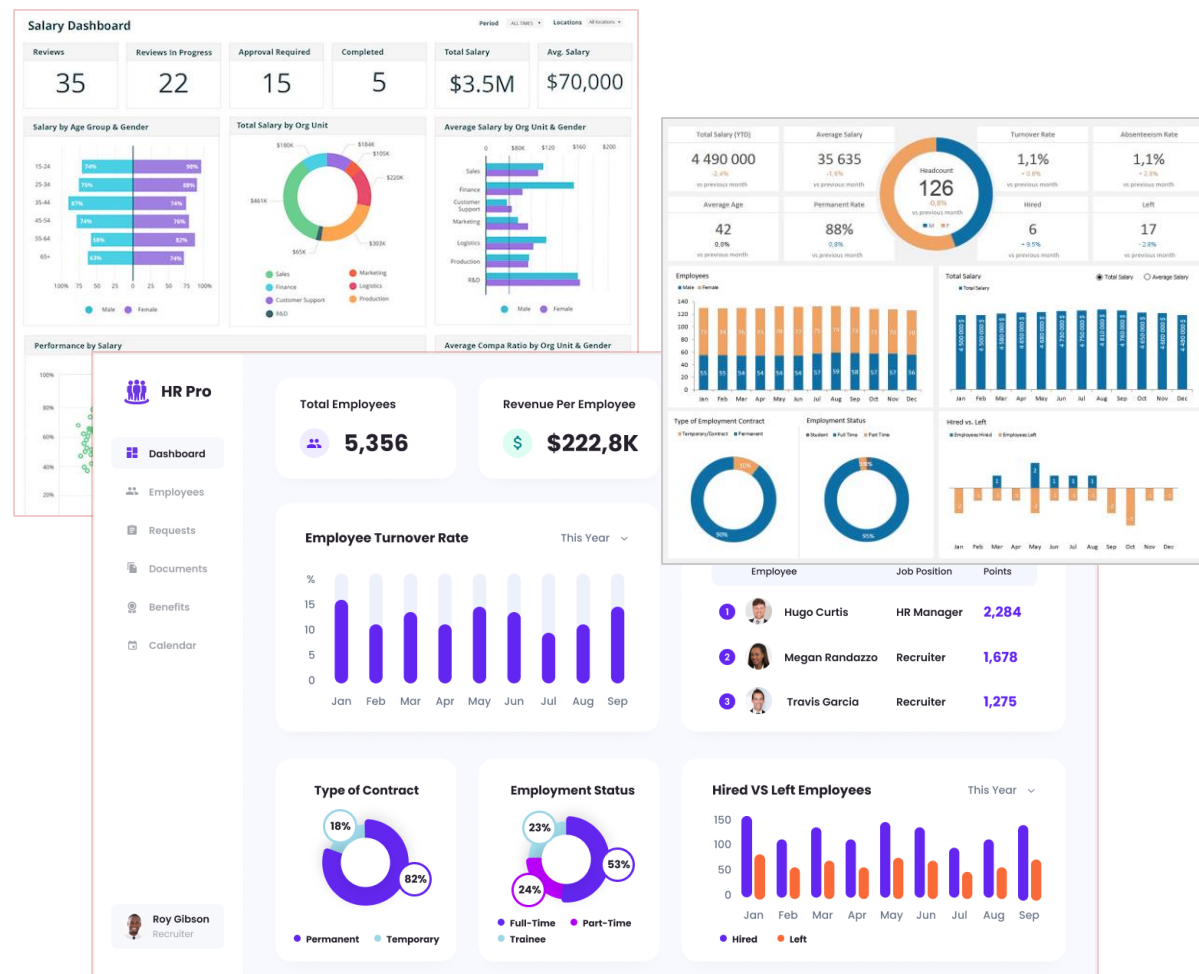
Compensation analysis



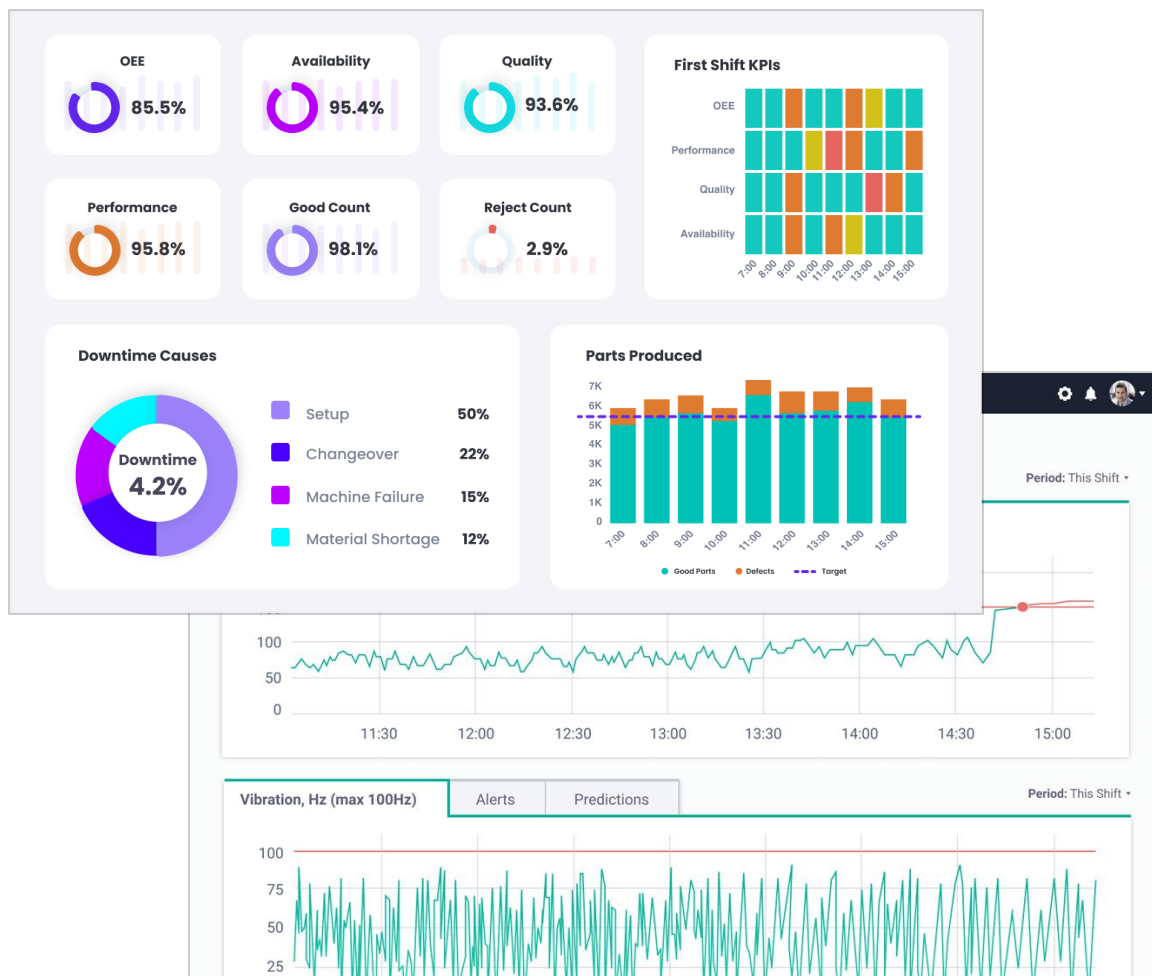
Talent management analysis



Absenteeism analysis



Industrial Analytics



Sample features:



Real-time machinery performance monitoring



Capacity utilization management



Predictive maintenance



Production output optimization



Process quality optimization

Analytics for Fraud Prevention

To reveal suspicious and fraudulent activity within and across business systems we use the following analytical techniques:



Anomaly detection

by calculation of statistical parameters (e.g., averages, high/low values)



Classification

to find patterns among data elements



Duplicate testing

to reveal duplicate transactions (e.g., payments, claims, expense report items)



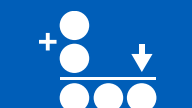
Gap testing

to pinpoint missing values in sequential data



Validating entry dates

to detect suspicious or inappropriate times for postings or data entry



Checking sums

to identify control totals that may have been falsified

BI Consulting and Development for Alta Resources

Client



Alta Resources, a global business process outsourcing provider.

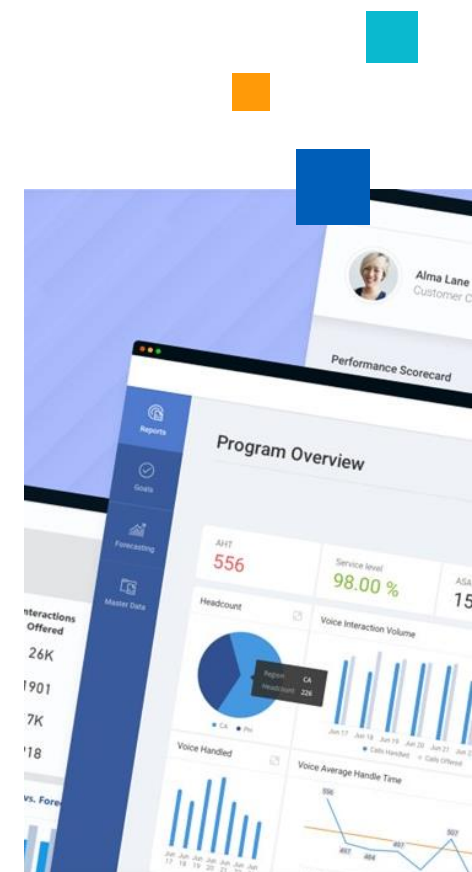
Solution

We implemented a full-scale BI solution with self-service capabilities that enables data-driven decision making, planning and performance management, and saves up to 90% of the report preparation time.

Tools & Technologies

Microsoft SQL Server, Microsoft Analysis Services, Microsoft Power BI, Microsoft SQL Server Integration Service.

[Project details →](#)



BI Consulting for a Multi-Business Company

Client

A diversified Kuwait-based company with 30+ businesses worldwide, such as oil and gas, travel, and FMCG distribution.

Solution

ScienceSoft worked out the architecture and technology stack for a BI solution aimed to integrate data across the Client's businesses and enable company-wide initiatives.

Methodologies

Q&A sessions, functional decomposition, business requirements analysis, comparative analysis.

[Project details →](#)



Big Data Implementation for Advertising Channel Analysis in 10+ Countries

Client

A leading market research company that analyzes media consumption patterns.

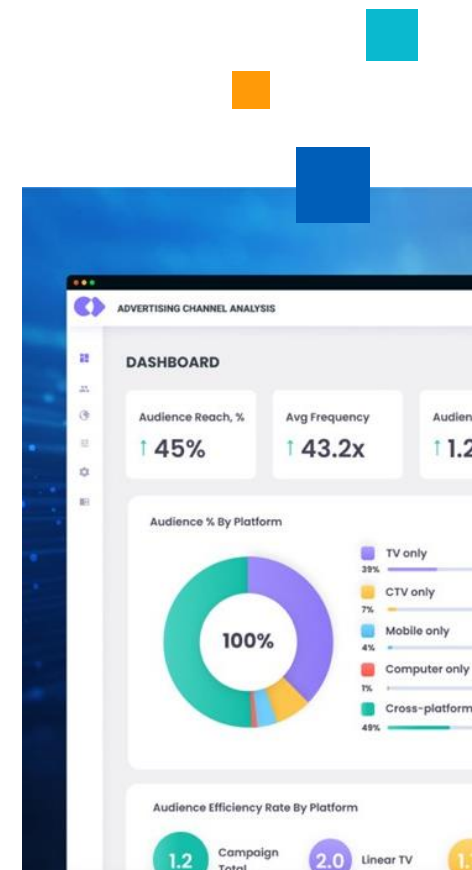
Solution

Migration to a new analytical system that is 100 times faster compared to the old one and can process 1,000 different data formats to provide insights into media consumption patterns in 10+ countries.

Tools and Technologies

Apache Hadoop, Apache Hive, Apache Spark, Python, Scala, SQL, Amazon Web Services, Microsoft Azure, .NET.

[Project details →](#)



BI Implementation for 200 Healthcare Centers

Client

200 US healthcare centers and retirement homes.

Solution

ScienceSoft created a system of 200 databases for data management and reporting on medication inventory, clinical services, patient data, marketing activities, etc.

Tools and Technologies

Microsoft SQL Server, Transact-SQL, JReport.

[Project details →](#)



Data Analytics Platform for a Telecom Company

Client

A Texas-based telecom company participating in the federal Lifeline Support Program and providing services to low-income individuals.

Solution

ScienceSoft implemented a big data management platform to aggregate data from 10+ sources and enable user engagement assessment, user behavior trend identification and forecasting, etc.

Tools & Technologies

AWS, Apache Kafka, MQTT, Amazon S3, Amazon Redshift, Airbnb Airflow, Python.

[Project details →](#)



Data Science Implementation for an FMCG Manufacturer

Client

A European dairy manufacturer exporting their wide portfolio of goods to 20+ countries worldwide.

Solution

ScienceSoft implemented science-based sales forecasting as well as identified the potential of up to 15% sales improvement that was calculated based on benchmark product, store and region sales.

Tools and Technologies

Microsoft SQL Server, Microsoft SQL Server Integration Services, Microsoft SQL Server Analysis Services, Python, Microsoft Excel, Power Pivot for Excel.

[Project details →](#)



Let's Make Your Project a Success!

